

## Setting Browser to Default

### Why?

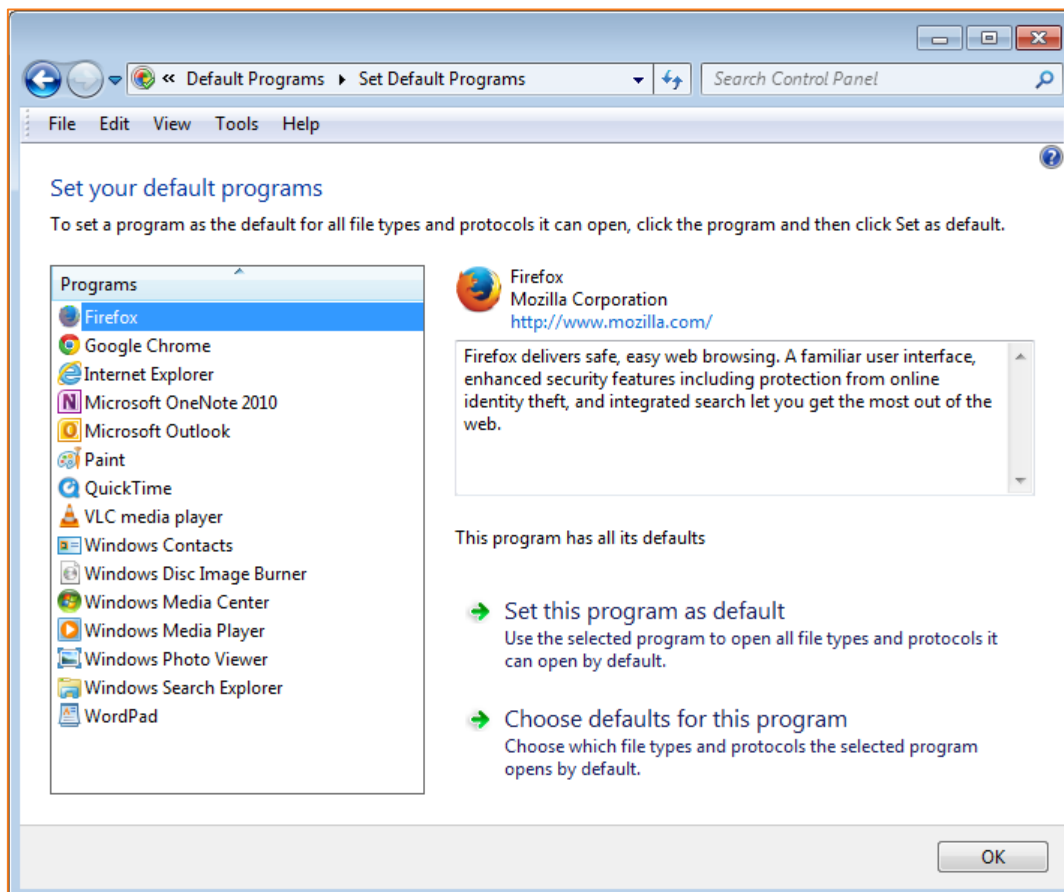
eLearn works better with some Internet Browsers better than others. Changing the default will mean that when you click on the eLearn Icon on your desktop, eLearn will open in this browser for you.

The recommended browsers for eLearn are [Mozilla Firefox](#) or [Google Chrome](#).

### Windows 7

The following instructs you on the quickest way to set your default browser using Windows 7.

1. Open Default Programs by clicking the **Start** button , and then clicking **Default Programs**.
2. Click on the program you want, I am choosing **Firefox**, then click on **Set this program as default**.

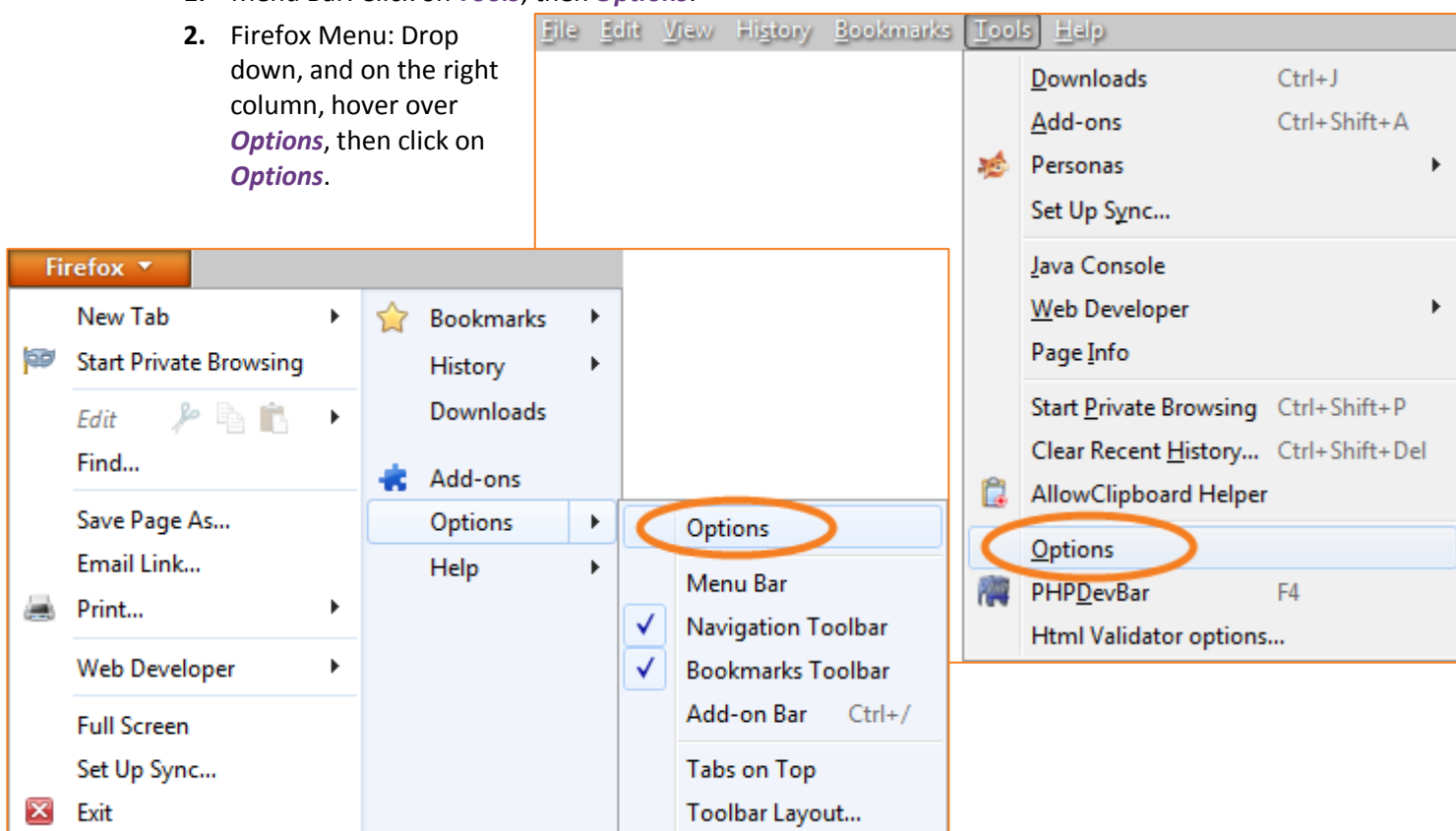


## All other Operating Systems

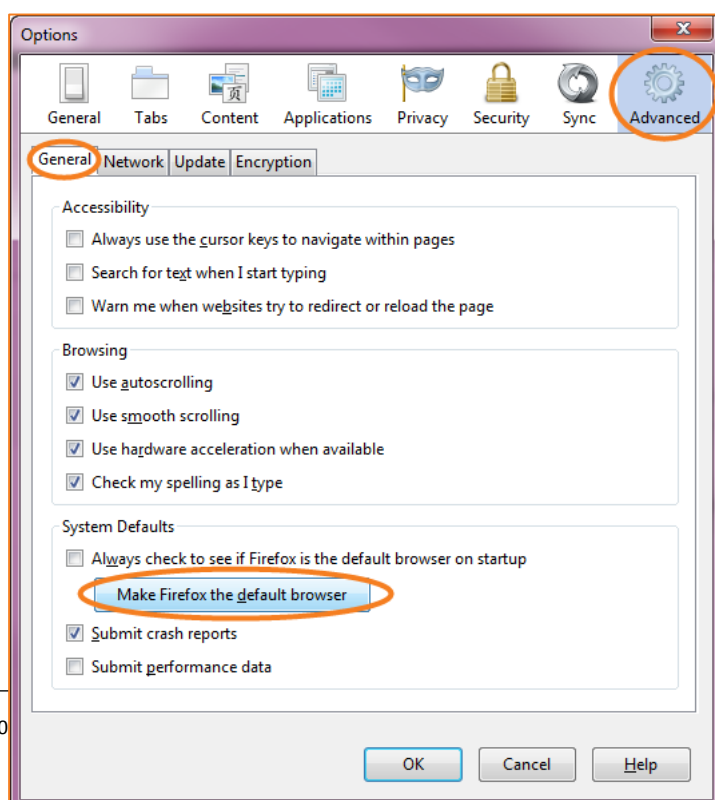
In any other operating system, you will need to set the default in the browser itself. How to do this varies with each browser so the following may change.

### Firefox


1. Menu Bar: Click on **Tools**, then **Options**.
2. Firefox Menu: Drop down, and on the right column, hover over **Options**, then click on **Options**.



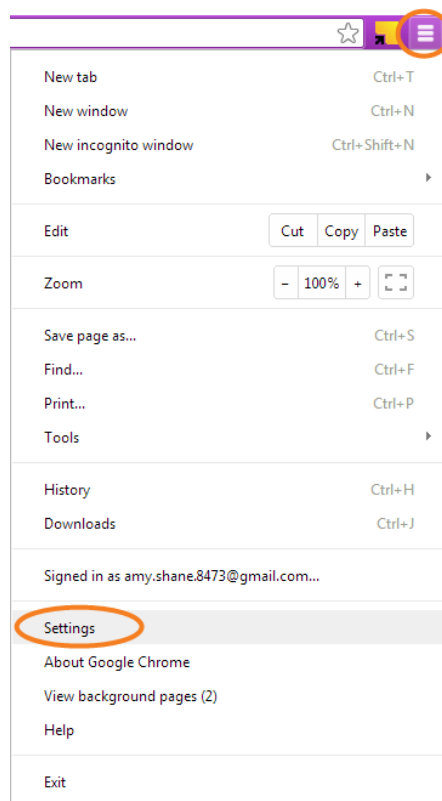
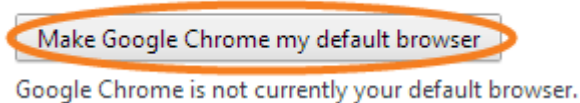
3. In the **Options** window, click on **Advanced**, then the **General** tab underneath.
4. Down the bottom of this will be the **System Defaults** settings and a button to click on to **Make Firefox the default browser**.
5. **OK** out of this to finish.



## Google Chrome

1. To the right of the address bar, click on the icon with 3 lines  to drop down the menu.
2. Click on *Settings*.
3. A new tab will open up and you will be on the settings page. At the bottom of this page, there is a button to *Make Google Chrome my default browser*. Click on this to set Chrome as your default.

### Default browser



## Safari

1. In the menu bar, click on *Edit*, then *Preferences*.
2. In the *General* tab, the first option is *Default web browser*. Drop down this menu and choose *Safari*.
3. Click on the red X in the top corner of this pop-up to save and close.

