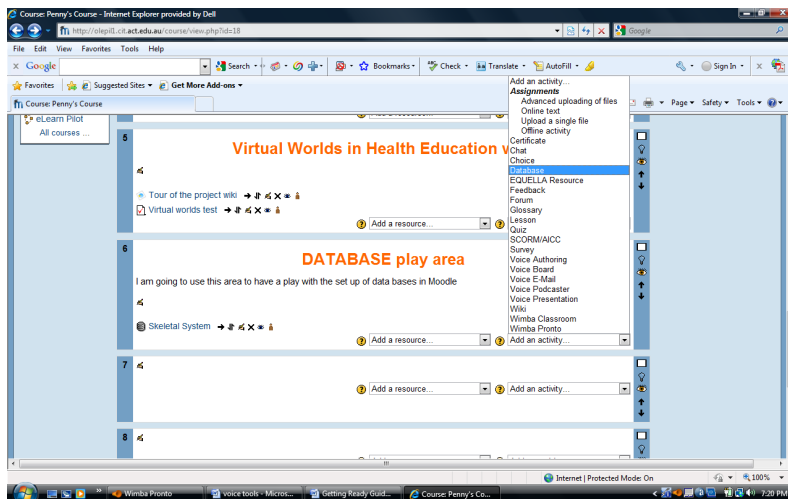


eLearn Databases

The database tools can be used as a repository for information that the teacher or as a database that the students can create e.g. OH&S pictures from work/ wounds and descriptions.

Adding a database to your course

In the area that you would like to add the database activity, click on the down arrow of the add activity button and add select a database.



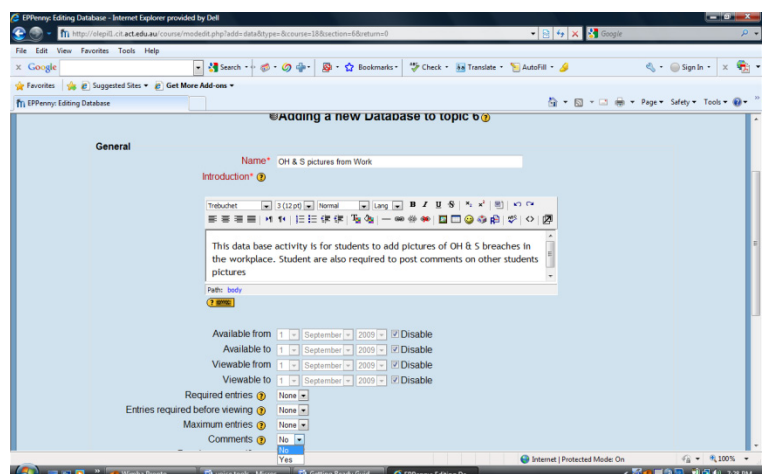
Database information

Fill in the relevant information.

This is the area that you can select when you want the data base to be open to students. You can select if you, as the teacher want to check them before the other students can see them.

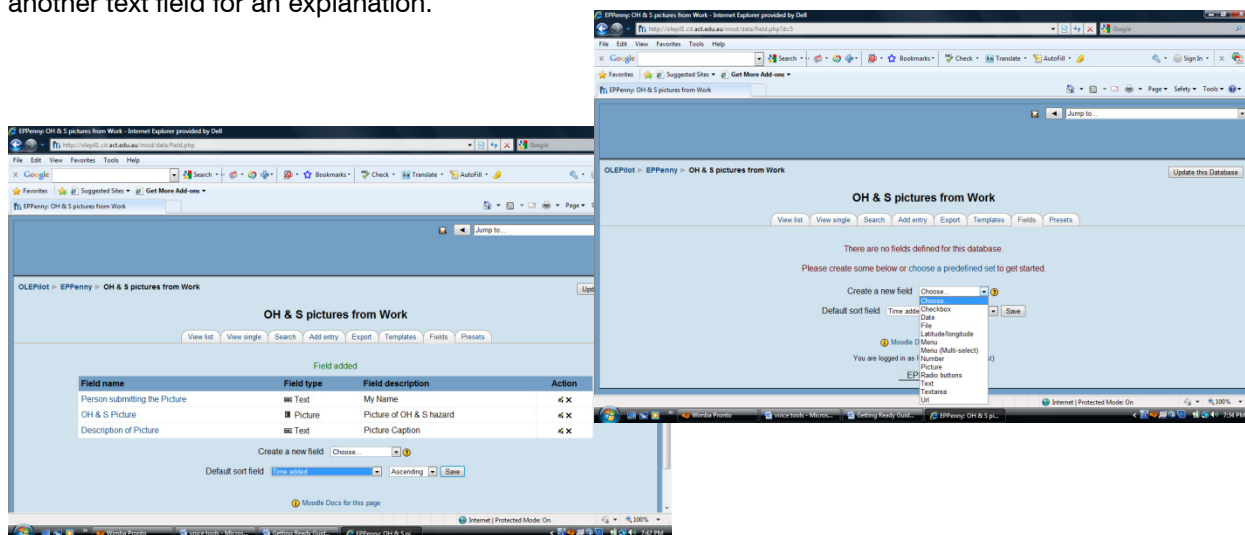
The comments section (yes or no), if you select yes, other students can post comments on the other students work.

Once you have finished click on save and return to your course.



Fields (the layout of your data base)

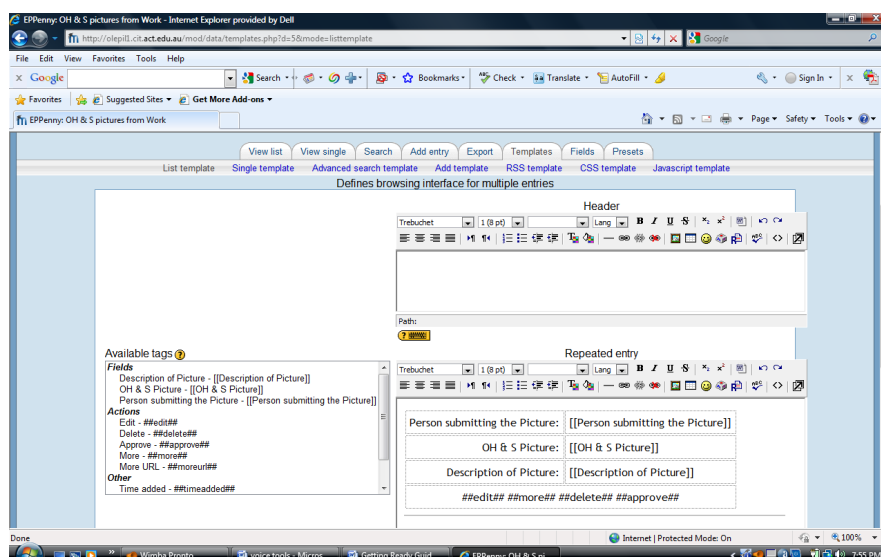
When you click on the data base in your course you will see this screen and you will need to set up the fields for your data bases. E.g select a text field to be the title of the picture, next the picture field, another text field for an explanation.



Adjusting the Template

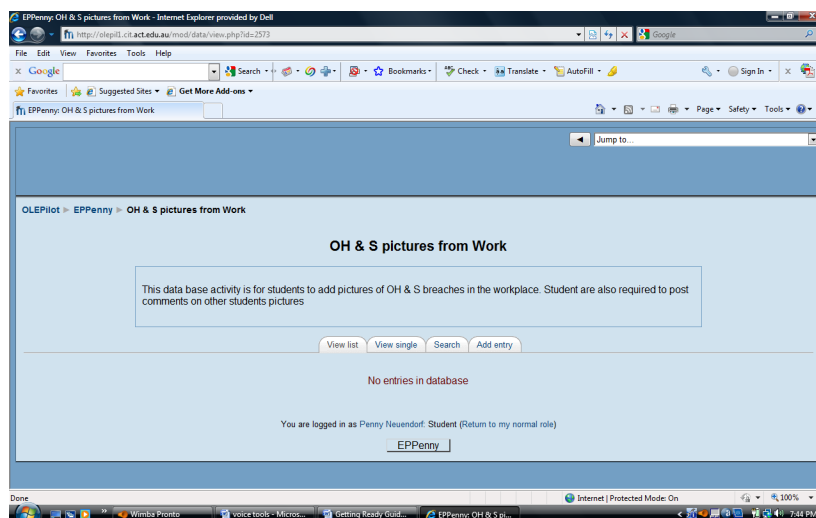
Click on the data base activity in the course and select template.

You will be able to adjust the fields here, change order or change font etc, once you have finished click save template.



Adding an entry

When students click on the activity the entries that are already there will be shown and they have the option of adding a new entry.



Using the Data Base

Students will be able to view whole data base and scroll down or do a search to find an object

